

Burton Bulletin

Burton Bradstock CE Primary School

Spring Term 1, Week 3

NEXT WEEK...

MON	Story Time with Ms Geraghty, 3.20 - 4pm
TUES	You and Me Time , The Nest 8.40 - 9am Reading Club , lunchtime Forest School , Kingfisher Class Primary Forest after school club
WED	Pantomime visit to school , Sleeping Beauty Celebration Worship , 2.40pm for 2.45pm start
THUR	You and Me Time , Robin Class 8.40 - 9am KS2 External PE at Bridport Leisure Centre Running Club , replacement session Friday R - Yr 2 Multiskills Club with Mr Proudfoot, 3.20 - 4pm
FRI	Christingle Service , 2.15pm @ St Marys Church Running Club , replacement session, 3.20 - 4pm

DIARY DATES

17 - 21 Feb
Half Term

Monday, 24 February
INSET Day

Tuesday, 25 February
Students return

Tuesday, 4 March
XC relays @ Colfox

Thursday, 6 March
World Book Day

Tuesday, 18 March
Owls visit to Washingpool Farm

Wednesday, 19 March
Handball @ Colfox

Monday, 24 March
Owls visit to Higher Sturthill Farm

Friday, 4 April
Last day of Spring Term

There will be no **Rocksteady Band** or **West Country School Music** music lessons next Wednesday as we will be watching the pantomime.

Both providers allocate time for additional catch up lessons at the end of the term for any sessions missed so your child will not be missing out on their entitlement of music lessons.

MESSAGES

Wrap around care

Following our survey in the Autumn term, we are delighted to announce that our 'Stay and Play' club (wraparound care) will be up and running after February half term. At the club the children will take part in a range of different activities and there will be snacks and fruit available.

The club will be open to children in Reception - Year 6 and will run every evening after school from 3:20 - 5:20pm at a cost of £4.50 per hour. A discount for PP children will be available.

You will be able to book the club via the Arbor parent app from **Monday, 27 January at 6pm**. Please see the letter emailed today for full details.



Christingle Service

Please join us for the school Christingle service on **Friday, 31 January** at 2.15pm, tea and coffee available at the end.

As Tots will not be running an especially warm welcome is extended to siblings and they will be able to make their own Christingle!

Family Breakfast Church

This **Sunday, 26 January**, St Marys Church will be holding Family Breakfast Church from 9.30 - 10.30am. Enjoy a free breakfast along with crafts, songs and a bible lesson.

AROUND THE SCHOOL..



Our **Cross Country team** did really well at the Bridport schools event at Beaminster yesterday. Our Y3/4 boys team came 3rd overall with Louie securing 4th place! Well done to all involved.



This morning at worship the children helped Rev Andrew tell the story, 'Jesus on the Lake'.



Lots of children turned up for **book club** this week with Mrs Herbert. They were all listening inquisitively to her read, 'What colour is love?' by Linda Strachan and David Wojtowycz. So lovely to see!

Reading club runs every Tuesday lunchtime. There's no sign up, the children can come and go as they please.

The Nest learning this week is based around their class story, Owl Babies. The classroom has been filled with joyful 'hoots'!

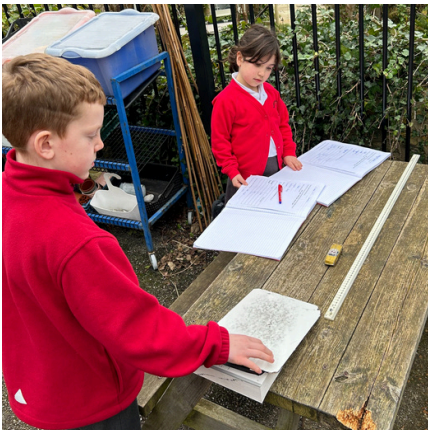


Robins enjoying PE! The climbing frame helps develop strength, control, balance and co-ordination.





Kingfisher had an exciting science lesson this week when they had to investigate different forces of friction. They rolled a toy car along different surfaces to find out which surface created the most friction.



My monster

What is your monster?	My monster is a tree based or plant based creature called Grendel. A hair like hair.
Describe what your monster looks like	My monster looks like a tree but its characteristics are a murdering monster. Your hair on your neck would stand up. Daggers on the back of his head.
Describe your monster's characteristics	My monster has long fingers, poisonous warts across his body and dagger like teeth. Burning eyes God-bribe creature. Killing creature. Staggering.
Describe where your monster lives	My monster lives in a big, grimy pond, dungeons, forest. With blood scattered along his teeth.

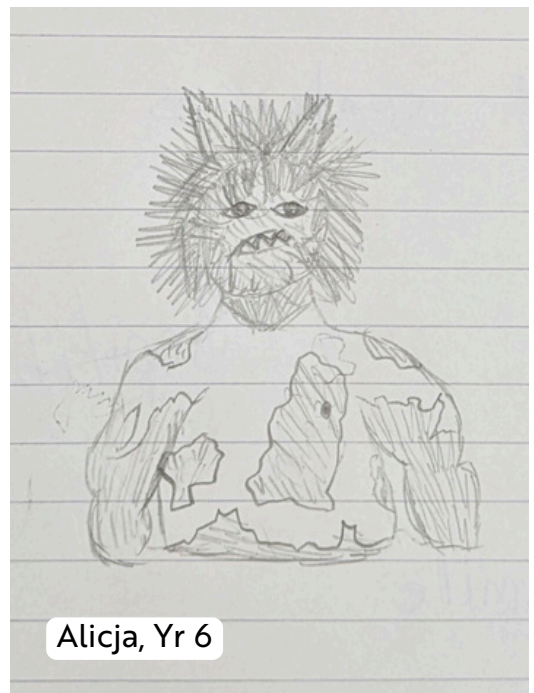
Anya, Yr 5

Owls created monsters in their English lesson.

My monster

What is your monster?	The big back bush! It is a viney green monster who lives in a jungle and it is very camouflage. And he can run as fast as an ant down. Big back bush: vine
Describe what your monster looks like	He has hands with sharp thorny vines streaming out. Sharp prickly grass growing up his back. Light green eyes which whenever you look at them the hairs on the back of your chin stick up.
Describe your monster's characteristics	My monster's weakness is that he is scared of light. Whenever he sees one human he would grasp their arm swing them round and bite and gulp them down as quick as light. He has toxic stench which will make you wet.
Describe where your monster lives	He lives in the middle of a jungle in a deep clump and eerie cave. There thick spiraling vines covering the mouth of the cave which looks like a human skull. Inside there bones and rotten flesh lying on the cave floor.

Lily, Yr 6





We're using Arbor's free Parent Portal and Parent App



We've chosen Arbor to help us manage our school.

Arbor is a simple, smart and cloud-based MIS (Management Information System), which helps us work faster, smarter and more collaboratively as a school. The Parent App and Parent Portal mean we can keep you informed about your child's life at school in a much more accessible way. Log into Arbor to see and update your child's information, get live updates and make payments or bookings on the go! The Parent Portal works on Google Chrome (computer or laptop) and you can download the Parent App from the App Store or Google Play Store on your phone (Android 5.0; iOS 10.0 and upwards).

How to get started

- 1.Wait for your welcome email from us telling you Arbor is ready - you won't be able to log in before
- 2.Click the link in your welcome email to set up your password
- 3.Go to the App or Google Play Store on your phone and search 'Arbor'
- 4.Click 'Install' on Android or 'Get' on iPhone then open the App
- 5.Enter your email, select the school, then enter your password
- 6.Accept the Terms & Conditions and enter your child's birthday

The Sunnyville School of Magic
W10 5BN, London, GBR

Enter your password

Log in

Forgotten password?

Need help using Arbor?

Contact the school office if you have questions about Arbor, the App or Parent Portal. Tell us the type and model of your phone, e.g. an iPhone SE, and include screenshots or screen recordings.

To safeguard student data in line with General Data Protection Regulations (GDPR), Arbor only works directly with schools.

Some tips to try:

- 1.Ensure your username is the email address you use for Arbor. Ask us to **check the email address** linked to your account.
- 2.**Reset your password** from the login page, or ask us to do this.
- 3.If the login email was sent to you more than 96 hours ago, the

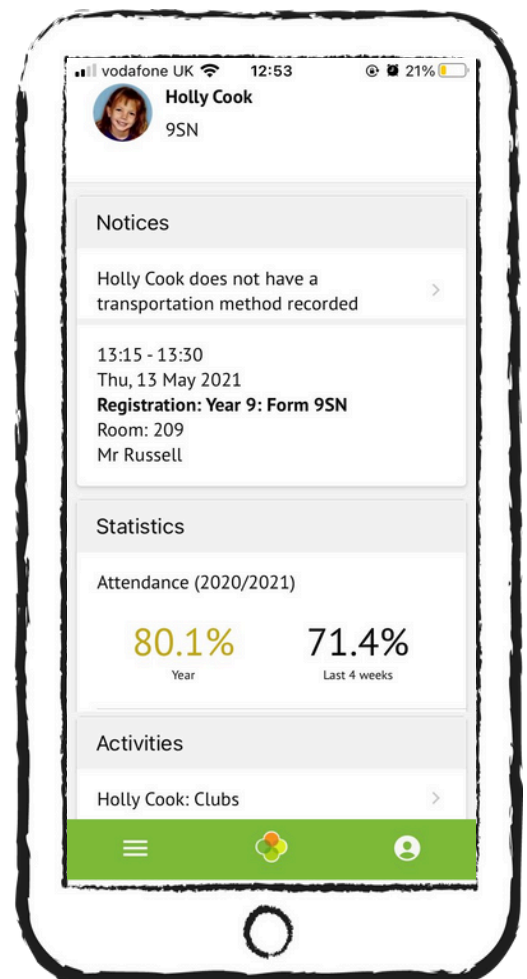
password link will have expired. Ask us to send it again.

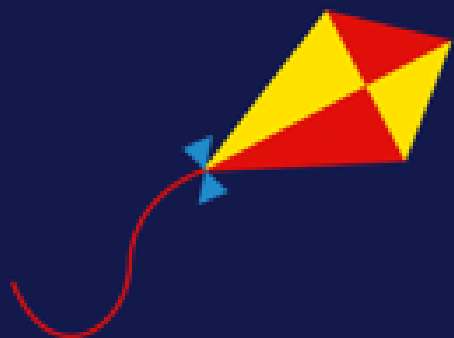
- 4.Ask the school office to check that your email address has not been used twice - e.g. on another guardian or child's profile.

Enter the birthday of one of your children to log in.

5.

- 6.Only relatives who are **Primary Guardians** of a child can access the Arbor App. Ask us to check you can access Arbor.

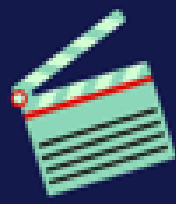




Girlguiding
West Dorset



We have units near you with spaces available now!



Broadwindsor

Comrades Hall

Mondays - Rainbows & Brownies

Thursdays - Guides & Rangers (fortnightly)

Bothenhampton

Village hall

Tuesdays - Guides

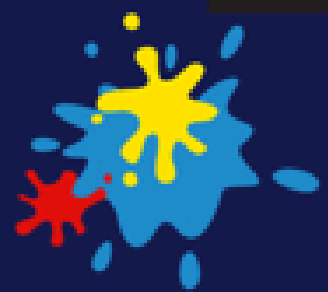
Fridays - Rainbows & Brownies



Bridport

United church hall

Tuesdays - Rainbows & Brownies



Charmouth

Wooton Fitzpaine village hall

Wednesday - Guides (fortnightly)



www.girlguiding.org.uk





We've now
helped
500+ STEM
professionals
return to work
across
the UK

Are you looking to return to STEM?



Have you taken a career break of any length from STEM and wish to return?

Are you working below your capability?

Do you have a STEM qualification that you aren't using?

**STEM Returners
opportunities with
Drumgrange**



Technician (Wireperson)

Location:

Onsite: Portland, Dorset

If so this could be the opportunity for you!

Please contact us for more information:



www.stemreturners.com



karen.clark@stemreturners.com